

How To Play *Bingo!*

When you arrive, you will want to purchase your bingo cards and/or electronic bingo machine. You have several choices when choosing what to purchase.

What is a 9-on? This is the most typical pack of bingo sheets players purchase. A 9-on gives you nine bingo cards per sheet per game. In other words, for each bingo played, you have 9 chances of winning.

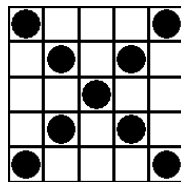
What is an Electronic Machine? Electronics are the easiest way a player can play multiple bingo cards at once. With the touch of a button, up to 56 bingo cards can be played at once.

What is a Progressive Game? There are two primary ways to play a progressive game. The first way requires covering a set pattern within a certain number of balls called. The second way is called Hot Ball and requires for the winner to have won with a pre-announced Hot Ball number. If no one wins, the jackpot progressively increases from week to week.

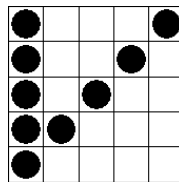
What is a Jumbo Pack? A Jumbo Pack includes a 9-on, progressive games, and an electronic machine.

The games begin! The caller will announce the first ball. When you see the ball selected on the screens, you may mark your paper. **However, the ball is not officially in play until announced by the caller.** If you are playing on electronics, your machine will not update until after the caller reads the ball. If you have bingo, yell out “Bingo!” **after** the ball is called and wait for a floor worker to come to you.

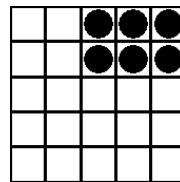
How do I know if I have a Bingo? When you purchase your bingo cards, you will be provided with a program of the games being played. Each game will have a different winning pattern such as the ones shown.



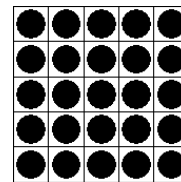
Large X



Maggie & Jigg



Six Pack



Coverall or Blackout

What are the Floor Workers selling? Throughout the night, floor workers and cashiers sell an instant lottery style ticket called Pull Tabs. The object of the game is to open the perforated windows on the back of the ticket and match the symbols inside the ticket to the winning combinations on the front of the ticket face. The winning ticket is turned in for a monetary prize. Pull tabs can be purchased at any point throughout the night; just gain the attention of a floor worker by calling out “Pull Tab!”

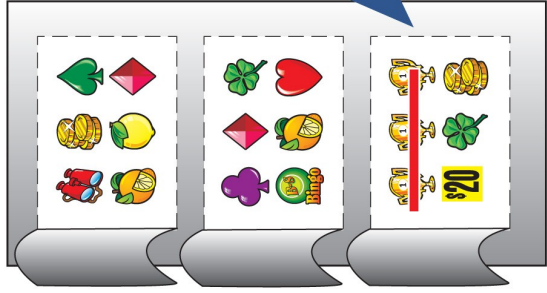
We are playing an Event Game. What is that? Event games bridge the gap between bingo and pull tabs. Event tickets are available for purchase the same way as pull tabs. Once all the tickets sell out, the event game can start. An event game winner is determined using the bingo flashboard. A common event game is derby horse races. The flashboard will light up as the caller reads off the balls. It is a race to see which vertical line will be completely lit up first. The event winner would be the holder of the ticket with the numbered horse or hold ball that matches with a number in the first down-line completely lit on the flashboard.

DO YOU DERBY?

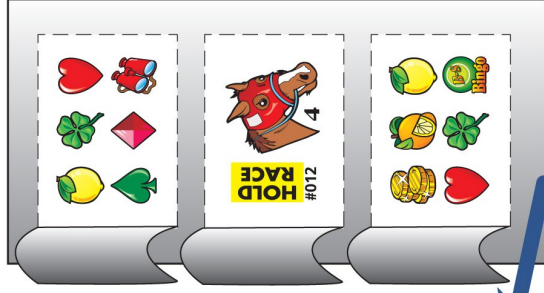
Easy Step by Step Play Instructions!



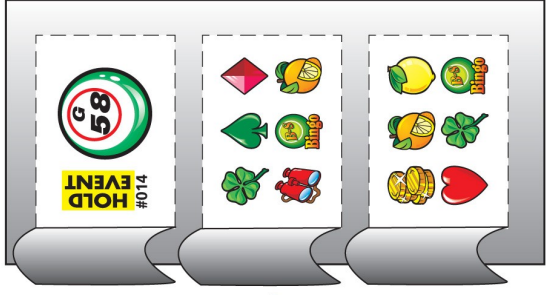
1 Sell all tickets in box.
Hold Horses numbered
1-15 and hold Bingo
Balls numbered 1-75.



2 Instant winners are
redeemed immediately.
Winning amount is
printed inside the ticket.

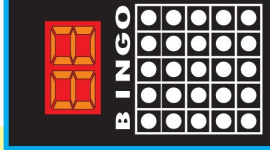


3 Horse winner is determined
during designated Bingo
game by first horse to
complete a vertical downline!



4 Ball winner is determined
during designated Bingo
game by last ball called for
a verified BINGO!

5 Once all tickets have been sold, the
caller will announce the play of Derby
on the next called game.
The first Horse to complete all 5
numbers in its downline wins the
Derby race.
The last called ball for a verified BINGO
determines the ball winner!



B	1	2	3	4	5	6	7	8	9	10	11	12	13	14	15
I	16	17	18	19	20	21	22	23	24	25	26	27	28	29	30
N	31	32	33	34	35	36	37	38	39	40	41	42	43	44	45
G	46	47	48	49	50	51	52	53	54	55	56	57	58	59	60
O	61	62	63	64	65	66	67	68	69	70	71	72	73	74	75